

EVG

VISION



PRODUCT CATALOG
2024



VISION PRO CHASSIS



When we decided we were going to start designing our new flagship chassis, we had one goal: to simply make the best, most well-thought-out, and highest-performing competition chassis that the market has ever seen.

Even though we spent countless hours designing, debating, and refinishing the smallest details, we were shocked by how well it performed when we first tested it out. But even then, we found more areas to improve to make it perform and feel even better.

The Vision Pro chassis is the result of years of feedback, testing, and dedication to give the shooting community the competition chassis they deserve. This dedication can be seen in our choice of material and in our choice of not settling for the cheapest and easiest-to-get screws that rust after one trip to the range.

COLOR OPTIONS



BLACK



CARBON GREY



FDE

TOP COVER OPTIONS



FULL TOP COVER



NIGHT VISION BRIDGE

ACTION COMPATIBILITY

Remington®

700 SA (And Clones)

MORE COMING SOON

VISION-600-R7S-BLK	Vision Pro Chassis Remington 700 SA Black
VISION-600-R7S-FDE	Vision Pro Chassis Remington 700 SA FDE
VISION-600-R7S-CBG	Vision Pro Chassis Remington 700 SA Carbon Grey
VISION-605-IP-BLK	Vision Pro Chassis Full Top Cover Action With Integrated Scope Base Black
VISION-605-IP-FDE	Vision Pro Chassis Full Top Cover Action With Integrated Scope Base FDE
VISION-605-IP-CBG	Vision Pro Chassis Full Top Cover Action With Integrated Scope Base Carbon Grey
VISION-605-EP-BLK	Vision Pro Chassis Full Top Cover Action With Extending Scope Base Black
VISION-605-EP-FDE	Vision Pro Chassis Full Top Cover Action With Extending Scope Base FDE
VISION-605-EP-CBG	Vision Pro Chassis Full Top Cover Action With Extending Scope Base Carbon Grey
VISION-611-BLK	Vision Pro Chassis Internal Weights x1 Black
VISION-611-KIT-BLK	Vision Pro Chassis Internal Weights Full Kit x5 Black
VISION-612-BRS-BLK	Vision Pro Chassis Sticky Bars For V-LOK Full Set Brass Black
VISION-612-ALM-BLK	Vision Pro Chassis Sticky Bars For V-LOK Full Set Aluminum Black
VISION-613-BLK	Vision Pro Chassis Night Vision Bridge Black
VISION-613-FDE	Vision Pro Chassis Night Vision Bridge FDE
VISION-613-CBG	Vision Pro Chassis Night Vision Bridge Carbon Grey
VISION-614-BLK	Vision Pro Buttstock External Weight Kit Black
VISION-615-BLK	Vision Pro Buttstock Internal Weight Studs Full Set 6x Black

SUPERIOR STRENGTH

When we were deciding what material to make the Vision Pro Chassis from, we didn't hold back, and the choice landed on 7075 aluminum. And that includes every single part, from the main body to the magazine release latch. In addition to this, walls have been made thicker, and a lot of material has been added to weak points. This has resulted in the making of the strongest and stiffest chassis on the market.

ADJUST TO YOUR NEEDS

We transferred some adjustments from the Vision chassis to the Pro chassis, improved them, and added a lot of new adjustability features. The adjustable buttstock has been improved both in stiffness and feel. The forend is even longer with more M-loks and our new V-Lok attachment system, and it has the possibility to add 1 kg or 2 lbs of internal weights. And last but not least, the magazine well features height and length adjustments to get the perfect magazine fit.

OPTIMIZED BALANCE POINT

With the Vision PRO Chassis, we listened to feedback and moved the barricade stop as close to the magazine as we could. As a result of this and our design choices, we managed to achieve an insanely good balance point. With a full-profile 26inch barrel and zero weights, the balance point sits three inches in front of the barricade stop, which can then be moved further with the use of weights.

ZERO VIBRATIONS

Have you ever been dry-firing and heard the vibrations in your chassis when pulling the trigger? Well, due to design and material choices, you won't have this problem with the Vision Pro Chassis. A common fix to this issue is to add rubber parts to your chassis, but with the Vision Pro Chassis, you won't have to even consider it.



WEIGHT

2.52 kg / 5.55 lbs
(Base Model Remington 700 SA)

MAX BARREL DIAMETER

1.350in / 34.3mm

MAGAZINE COMPATIBILITY

AICS, AW And AX Pattern Magazine Compatible.

MATERIALS

Aircraft-Grade 7075 Aluminum

LENGTH

960mm / 37.8in
(Depending On Adapter Block)

GRIP COMPATIBILITY

Compatible With AR-15 Style Grips.

FINISH

Elite Series Cerakote With Hard Anodized Parts.

FOREND LENGTH

480mm / 18.9in
(Depending On Model)

LENGTH OF PULL

12.25in - 14.1in / 311mm - 358mm
(Depending On Adapter Block)



QUICK-ADJUST BUTTPAD WITH NOTICABLE CLICKS



BRACKET RAILS AND ANGLES FOR SUPERIOR STIFFNESS AND FEEL



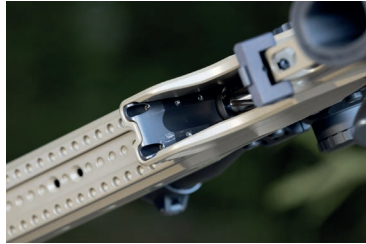
ADJUSTABLE CHEEK REST



AMBIDEXTRIOUS & TRUE VERTICALLY ADJUSTABLE MAGAZINE LATCH



AMBIDEXTRIOUS LH/RH ORIENTATION



MAGAZINE LENGTH ADJUSTMENT



QUICK-ADJUST BUTTPAD WITH NOTICABLE CLICKS



QD SLING CUPS ON FOREND AND BUTTSTOCK



V-LOK ACCESSORIES MOUNT



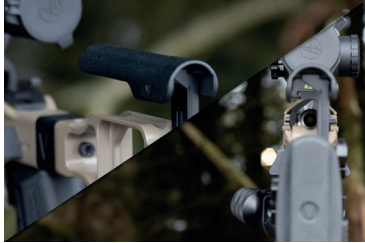
FOLDING HINGE COMPATIBLE



DRILLED AND TAPPED HOLES FOR MOUNTING TOP COVER AND NV BRIDGE



HOLE IN TRIGGER GUARD FOR EASY TRIGGER ADJUSTMENT ACCESS



MACHINED CLEARANCE IN BUTTSTOCK FOR EASY BARREL CLEANING



FULL LENGTH ARCA FOREND



QUICK-ADJUST BUTTPAD WITH NOTICABLE CLICKS



AR-15 VERTICAL GRIP



ACCESSORY MOUNT



WIDE & AGGRESSIVE BARRICADE STOP



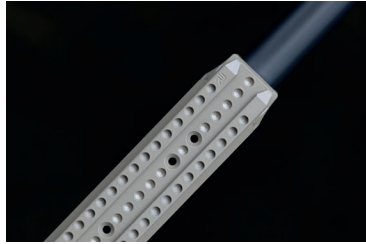
QUICK-ADJUST BUTTPAD WITH NOTICABLE CLICKS



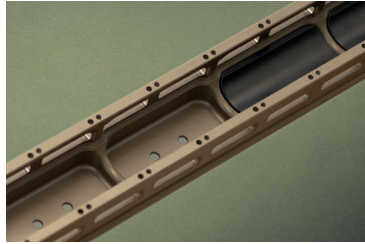
ADJUSTABLE THUMB REST ON BOTH SIDES



INTERNAL AND EXTERNAL BUTTSTOCK WEIGHTS COMPATIBLE



RRS-LOCK INTERFACE ALONG BOTTOM SURFACE OF FOREND



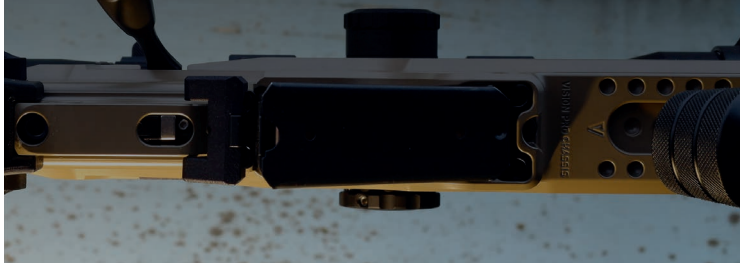
BRIDGES INSIDE FOREND FOR SUPERIOR STRENGTH



11X M-LOKS ON BOTH SIDES OF FOREND

ANTI-VIBRATION WASHERS

The Vision Pro Chassis is delivered with anti-vibration washers. With these, you don't have to worry about your action screws losing torque easily.



BLACK STAINLESS STEEL SCREWS

Have you ever owned a product that had rusty screws after using it once? This won't happen with the Vision Pro Chassis due to our dedication to every little detail. In addition to this, all visible screws are black, simply because we think they look much better than shiny screws.





THE VISION CHASSIS



The vision chassis is designed to be a plug and play replacement chassis for a continuously expanding catalog of inlets.

No matter the use case, this chassis will fit perfectly with its vast possibilities of adding accessories, modularity and tuning to your preference through the ever expanding variations of parts.

The vision chassis has all the adjustability a shooter could ever imagine and is constantly upgraded and refined as new features or areas of improvement are discovered.

No matter what system you have, this is a guaranteed upgrade and is definitely the most modular and adjustable chassis on the market.

Contrary to almost every other chassis on the market, one vision chassis can fit all of your rifles because of the easy replacement of one of the chassis main parts (buttstock, mid section or forend).

FOREND OPTIONS

*COLORED DOTS INDICATE COMPATABILITY

STANDARD FOREND ●



COMPETITION FOREND ●



MEDIUM COMPETITION FOREND ●



COVERT FOREND ●



TOP COVER OPTIONS

MODULAR FLAT TOP ●●



STANDARD NIGHT VISION BRIDGE ●●



ENCLOSING NIGHT VISION BRIDGE ●●



PICATINNY RAIL OPTIONS

NIGHT VISION PICATINNY RAIL ●



ACTION COMPATIBILITY

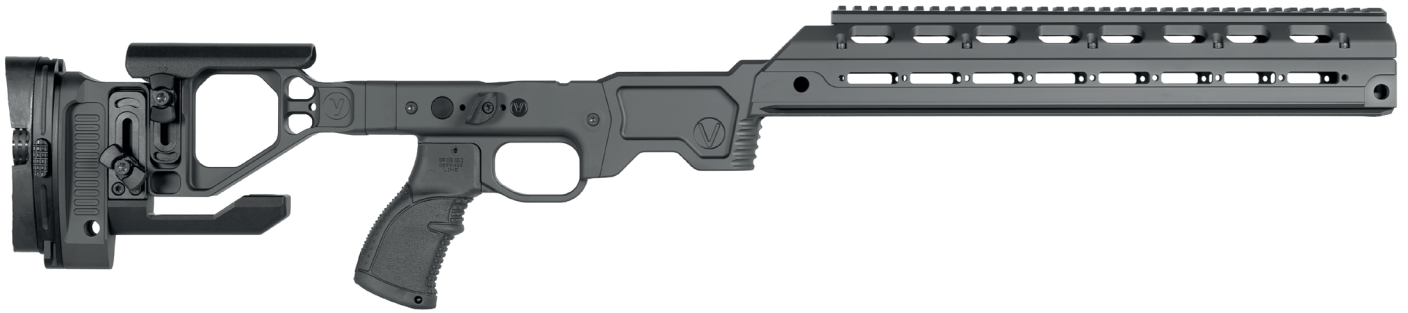


VISION-200	Mid Section SigSauer 200/3000
VISION-200-LINKS	Mid Section SigSauer 200/300 Links
VISION-201-SA	Mid Section Tikka T3 SA
VISION-201-SA-LINKS	Mid Section Tikka T3 SA Links
VISION-201-LA	Mid Section Tikka T3 LA
VISION-207	Mid Section Tikka T3 XM
VISION-201-CTR	Mid Section Tikka T3 CTR
VISION-208	Mid Section CZ 457
VISION-202-SA	Mid Section Remington 700 SA (and clones)
VISION-202-SA-LINKS	Mid Section Remington 700 SA Links (and clones)
VISION-202-LA	Mid Section Remington 700 LA (and clones)
VISION-202-LA-LINKS	Mid Section Remington 700 LA Links (and clones)
VISION-203	Mid Section Remington 700 LA XM (and clones)
VISION-204	Mid Section Sako TRG-22
VISION-206	Mid Section Sako TRG-42

VISION-240	Standard Buttstock
VISION-214	Standard Forend
VISION-218	Modular Flat Top For Standard Forend
VISION-213	Competition Forend
VISION-217	Medium Length Competition Forend
VISION-234	Covert Forend
VISION-219	Night Vision Bridge For Vision Chassis
VISION-212	Enclosing Night Vision Bridge For Vision Chassis
VISION-340	Night Vision Picatinny Rail



AO/V ACCURACY INTERNATIONAL CHASSIS



The AO/Vision chassis is a significant upgrade for your A.I. rifle.

The Vision A.I. parts makes your A.I. an all-around rifle ready to tackle anything thrown your way.

The Chassis is compatible with a night vision bridge or a full-length top cover that encloses the whole forend. The chassis has eight m-lok slots on both sides and underneath, it fits four vision modular weights on the inside, has QD-locks on both sides in the front, a rounded barricade stop that guarantees a stable position in every scenario you can imagine and has ARCA/RRS dovetail along the whole forend.

Every Vision A.I. build part can be used as a standalone upgrade to your rifle, or be paired with all our other A.I. products.

BUILD PARTS

AO/V CHASSIS



VISION A.I. BUTTSTOCK



VISION A.I. ALUMINUM GRIP PANELS



TOP COVER OPTIONS

AO/V NIGHT VISION BRIDGE ●



AO/V FULL LENGTH TOP COVER ●●



PICATINNY RAIL OPTIONS

NIGHT VISION PICATINNY RAIL ●



AO/V FULL LENGTH PICATINNY RAIL ●



*COLORED DOTS INDICATE COMPATABILITY

CHASSIS COMPATIBILITY

AO/V CHASSIS

AW = AT
AX

VISION A.I. BUTTSTOCK

AW* = AT*
AX

VISION A.I. ALUMINUM GRIP PANELS

AW* = AT*
AX

ACTION COMPATIBILITY

AO/V CHASSIS

308. = 338.

VISION A.I. BUTTSTOCK

308. = 338.

VISION A.I. ALUMINUM GRIP PANELS

308. = 338.

VISION-230	AO/V A.I. Chassis 308.
VISION-238	AO/V A.I. Chassis 338.
VISION-231	A.I. Night Vision Bridge
VISION-233	A.I. Full length Top Cover
VISION-232	A.I. Aluminium Grip Panels
VISION-239	A.I. Buttstock
VISION-341	Picatinny Rail A.I. Full Length Top Cover
VISION-340	Night Vision Picatinny Rail

* WITH FOLDING HINGE



EVA
VISION

KRG/TRG COMPETITION FRONTGUARD



The Vision KRG/TRG competition forend is designed for shooters ready to take their KRG/TRG to the next level. Machined from aluminum for high strength and low weight.

It features a rounded barricade stop, integral QD flush cup sling mount on both sides of the forend, arca rail stretching across the entire forend, eight m-lok slots on both sides and seven m-lok slots underneath for mounting of weights, picatinny rails and much more. NV-bridge ready. The forend also features an adjustable magazine well Easily mounted with four screws underneath the forend.

WHAT YOU GET

KRG/TRG COMPETITION FRONTGUARD



ADD-ONS

KRG/TRG NIGHT VISION BRIDGE



NIGHT VISION PICATINNY RAIL



ACTION COMPATIBILITY



CHASSIS COMPATIBILITY



VISION-902	KRG Competition Frontguard Upgrade Remington 700 LA 3,85MAG
VISION-903	KRG Competition Frontguard Upgrade Remington 700 SA
VISION-904	KRG Competition Frontguard upgrade Tikka SA
VISION-906	KRG Competition Frontguard upgrade Howa 1500 SA
VISION-908-ORG	TRG Competition Frontguard Upgrade TRG-22 TRG Buttstock
VISION-908-KRG	TRG Competition Frontguard Upgrade TRG-22 KRG Buttstock
VISION-909-ORG	TRG Competition Frontguard Upgrade TRG-42 TRG Buttstock
VISION-909-KRG	TRG Competition Frontguard Upgrade TRG-42 KRG Buttstock
VISION-905	Night Vision Bridge KRG Frontguard Upgrade

 VISION



VISIONPRC.com

PRO CHASSIS





VISION HYBRID CHASSIS



The Vision Hybrid chassis is designed and manufactured for both competition shooting and hunting. The chassis weights only 660grams (without buttstock, buffer tube and grip) and is compatible with both mil spec and commercial buffer tube.

With the right choice of buttstock, barrel and scope, this chassis can become extremely light weight and perfect for hunting.

On the contrary, with heavier and more adjustable buttstock and added weights, this chassis is a very affordable chassis for competition shooting.

The chassis has the possibility for mounting of our thumb rest and wide magazine release for easier magazine ejection.

The chassis features six m-lok slots on both sides and five underneath, is compatible with AR-15 style grips and has ARCA/RRS dovetail along the whole front.

WHAT YOU GET

VISION HYBRID CHASSIS



FAB DEFENCE AGR-43

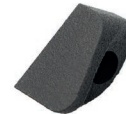


ADD-ONS

WIDE MAGAZINE RELEASE



ADJUSTABLE THUMBREST



COLOR OPTIONS



COMPATIBILITY



VISION-235-1	Hybrid Chassis Remington 700 SA (And Clones) Black (Anodized)
VISION-235-2	Hybrid Chassis Remington 700 SA (And Clones) Mil Spec O.D. Green (Cerakote)
VISION-235-3	Hybrid Chassis Remington 700 SA (And Clones) FDE (Cerakote)
VISION-235-4	Hybrid Chassis Remington 700 SA (And Clones) Combat Grey (Cerakote)
VISION-236-1	Hybrid Chassis Tikka SA Black (Anodized)
VISION-236-2	Hybrid Chassis Tikka SA Mil Spec O.D. Green (Cerakote)
VISION-236-3	Hybrid Chassis Tikka SA FDE (Cerakote)
VISION-236-4	Hybrid Chassis Tikka SA Combat Grey (Cerakote)
VISION-237-1	Hybrid Chassis Defacto Black (Anodized)
VISION-237-2	Hybrid Chassis Defacto FDE (Cerakote)
VISION-237-3	Hybrid Chassis Defacto Combat grey (Cerakote)
VISION-237-4	Hybrid Chassis Defacto Mil Spec O.D. Green (Cerakote)
VISION-401	Thumb Rest RH
VISION-426	Thumb Rest LH
VISION-405	Wide Magazine Release



VULCAN BRAKE

The difference between the Vulcan brake and every other brake on the market is the seven adjustable ejection ports on top of the brake. These ports are in connection with the blast chamber that is made before the actual recoil reducing chambers. This is made to first counter the rise of the muzzle before the gas goes on to reduce recoil.

The adjustable ejection ports are designed to counter muzzle rise and therefore eliminate all or as much as possible of the muzzle rise, very commonly experienced when shooting with a brake.

This again helps the shooter better track the bullet trace and get off the next shot faster due to the scope still being in the near proximity of the engaged target.

Instead of having all the holes open at all times, we made it possible to adjust using set screws to allow the shooter to fine tune the recoil depending on what ammunition you shoot.

A lot of our focus also went into making the brake less disturbing to the shooter, making it easier to maintain focus during a competition/training. This is achieved by having the recoil reducing chambers face straight out which pressure from blowing back on the shooter and nearby people.



How it's made

The Vulcan brake is precision machined from 17-4 PH stainless steel and all threads are manually checked by our personnel to be within the specification required.

All sharp edges is deburred in the machine to achieve a clean and nice-to-handle product.

Material facts:

- 17-4PH combines high strength and hardness with good corrosion resistance.
- 17-4PH is commonly used in aerospace industry, petroleum industry, chemical industry and more

Easy installation:

The Vulcan muzzle brake is made with the counter nut principle. Screw on and lock it with the counter nut, then your good to go!!

The brake has three nut locking screws which allows you to lock net nut in the desired position after the first alignment, this makes it easier for you to get a perfect alignment every time you detach and attach the brake.

The Brakes comes with a tightening pin made from hardened steel that are screwed into a M5 thread at the bottom of the brake to allow you to install the brake without the use of a wrench, which in return keeps the brake free of scratches.

SPECIFICATIONS

THREAD	CALIBER	FINISH	WEIGHT	DIAMETER
M18x1 6H	6MM / .243	17-4 STAINLESS STEEL / RAW	145 GRAMS	29 MM
5/8-24 2B	6.5MM / .264	17-4 STAINLESS STEEL / BLACK	5.1 OUNCES	1.14 IN
	7.62MM / .30			

VISION-430	Vulcan Brake M18x1 6mm / .243 RAW
VISION-431	Vulcan Brake M18x1 6.5mm / .264 RAW
VISION-432	Vulcan Brake M18x1 7.62mm / .30 RAW
VISION-433	Vulcan Brake 5/8-24 6mm / .243 RAW
VISION-434	Vulcan Brake 5/8-24 6.5mm / .264 RAW
VISION-435	Vulcan Brake 5/8-24 7.62mm / .30 RAW

VISION-430-B0	Vulcan Brake M18x1 6mm / .243 BLACK
VISION-431-B0	Vulcan Brake M18x1 6.5mm / .264 BLACK
VISION-432-B0	Vulcan Brake M18x1 7.62mm / .30 BLACK
VISION-433-B0	Vulcan Brake 5/8-24 6mm / .243 BLACK
VISION-434-B0	Vulcan Brake 5/8-24 6.5mm / .264 BLACK
VISION-435-B0	Vulcan Brake 5/8-24 7.62mm / .30 BLACK



VISION PICATINNY RAILS

We always try to offer products for a one-stop shop for everything rifle upgrades. Therefore, it is important for us to offer high end scope base picatinny rails. Every picatinny rail is completely deburred to eliminate every sharp edge. everything is made from high end aircraft aluminum and then high end anodized for a good looking finish and to increase abrasion and corrosion resistance.

Remington®

700 SA

Built in 20MOA of elevation for extended long-range shooting. Machined from aircraft grade aluminum. Anodized black for abrasion and corrosion resistance. Dual side ejection port cutout. The scope base has a built-in recoil lug which secures the base from moving under recoil.

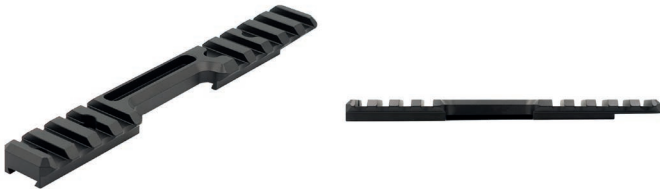


TIKKA

SECOND TO NONE

T1x

Built in 20MOA for extended long-range shooting. Machined from aircraft grade aluminum. Anodized black for abrasion and corrosion resistance. single side ejection port cutout. Available in both right hand (RH) and left hand (LH)



T3

Built in 20MOA for extended long-range shooting. Machined from aircraft grade aluminum. Anodized black for abrasion and corrosion resistance. single side ejection port cutout. Available in both right hand (RH) and left hand (LH)



457

Built in 20MOA for extended long-range shooting. Machined from aircraft grade aluminum. Anodized black for abrasion and corrosion resistance. single side ejection port cutout. Available in right hand (RH).



SIGSAUER®

200 STR

Built in 20MOA of elevation for extended long-range shooting. Machined from aircraft grade aluminum. Anodized black for abrasion and corrosion resistance. Single side ejection port cutout. dovetail action top. Mounted with 6 screws on the side and 2 screws from the top



Howa

H-MINI

Built in 20MOA of elevation for extended long-range shooting. Machined from aircraft grade aluminum. Anodized black for abrasion and corrosion resistance. Dual side ejection port cutout. The scope base has a built-in recoil lug which secures the base from moving under recoil.



BERGARA®

OUR BARRELS MAKE THE DIFFERENCE

B14R

Machined from aircraft grade aluminum. Anodized black for abrasion and corrosion resistance. Dual side ejection port cutout. available in 20, 30 and 40 MOA.



M-LOK

M-LOK picatinny rail for mounting of picatinny accessories anywhere with M-LOK slots. Also features and integrated QD-lock cup. Machined from aircraft grade aluminum. Anodized black for abrasion and corrosion resistance.



UIT

UIT picatinny rail for mounting of picatinny accessories anywhere with UIT slot. Machined from aircraft grade aluminum. Anodized black for abrasion and corrosion resistance.



VISION-220	Picatinny Rail SigSauer 200, Dovetail Action Top 20MOA
VISION-221	Picatinny Rail Tikka T3 20MOA
VISION-228	Picatinny Rail Tikka T3 Links 20MOA
VISION-222	Picatinny Rail Tikka T1x 20MOA
VISION-222-LINKS	Picatinny Rail Tikka T1x Links 20MOA
VISION-224	Picatinny Rail Bergara 20MOA
VISION-225	Picatinny Rail Bergara 30MOA

VISION-226	Picatinny Rail Bergara 40MOA
VISION-227	Picatinny Rail CZ 457 20MOA
VISION-229	Picatinny Rail Howa (H-Mini) 20MOA
VISION-223	Picatinny Rail With QD-Lock For M-lok Slot
VISION-310	Picatinny Rail UIT Rail 10 cm
VISION-311	Picatinny rail remington 700 sa



VISION ACCESSORIES

We always try to offer our chassis users the best accessories to make our products even better to use. Therefore, we are always expanding our offering of accessories for every purpose imaginable. These accessories are precision machined and then either anodized or cerakoted.

MODULAR M-LOK WEIGHT KIT

Modular M-LOK weight kit made for mounting on any M-LOK slot and inside The Vision competition style forends. The weights are also stackable and therefore there are no limit to how heavy your rifle can get (usually used in ELR to eliminate recoil). They are machined from brass and are available in black and polished brass. Delivered with black stainless steel torx screws.



VISION CHASSIS FOLDER

The vision holding mechanism is a highly robust and reliable folding mechanism. It is designed to be used between the vision chassis mid section and vision chassis buttstock. The folding mechanism is unlocked by the push of a button and locked by folding the buttstock back in position. The way that the folder is designed makes the folder perfectly sturdy and the buttstock will not move freely unless moved by user, that being said, the folder is not hard for the user to move.



A.I. SKELETONIZED TRIGGER SHOE

Our AI trigger shoe is an ascetic upgrade to your ai trigger. It is easily changed with one screw and makes your ai look even better.



HUNTER BRAKE

The hunting brake is the perfect accessory for hunters that don't want a big bulky compensator that makes a big bang when firing. It is small, light and helps quite a bit with recoil. It is also perfect as a thread protector because of how small it is. The hunter brake is available in M14x1 and M15x1



UNIVERSAL SA MAGAZINE EXTENTION

Universal SA magazine extention that adds approximately +3 (depending on cartridge and magazine). Machined from aircraft grade aluminum then cerakoted for corrosion resistance and a nice feel. Easy to install and as robust as you get it.



XL MAGAZINE RELEASE

The vision chassis may have feeding issues with a small percentage of magazines, this is where the XL tikka/remington SA magazine release comes in handy. This heightens the magazine release by 3.81mm/0.15in which makes the magazine closer to the action and removes all feeding issues.



SHORT ADAPTER BLOCK

If you need a shorter length of pull this is the product for you. By replacing your standard adapter block with this you decrease the length of pull by approximately 23mm/0.9in.



A.I. BARREL THREAD CAP

Barrel thread cap to protect A.I. barrels while detached from you rifle. Available for M27x2 and M30x2.



VERSAPOD ADAPTER STANDARD FOREND

The versapod adapter is our in-house spigot that fits the vision chassis standard forend and is designed to easily mount different spigot accessories.



VISION-301	Universal SA Magazine Extension
VISION-516	Modular M-Lok Weight Kit
VISION-821	Hunter Brake M14-1
VISION-822	Hunter Brake M15-1
VISION-400	XL magazine release
VISION-402	Barrel thread cap M27x2

VISION-403	Barrel thread cap M30x2
VISION-404	Short adapter block
VISION-AI-TRIGGER	Skeletonized Trigger Shoe For AT/AX
VISION-251	Versapod Adapter Vision Chassis R93/R8
VISION-211	Vision Chassis Folding Mechanism







DESIGNED | MACHINED | ASSEMBLED IN NORWAY



VISIONPRC.com

